



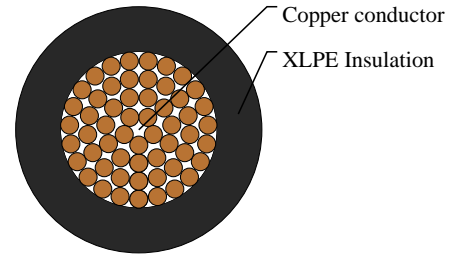
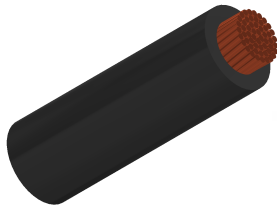
Caledonian

Automotive Cables

www.caledonian-cables.com

marketing@caledonian-cables.com

FL2X



APPLICATIONS

This XLPE insulated single-core cable is used for low voltage electric installations in vehicles.

STANDARDS

ISO 6722 Class C

CABLE CONSTRUCTION

Conductor: Cu-ETP1 bare according to DIN EN 13602

Insulation: XLPE

PHYSICAL AND THERMAL PROPERTIES

Operating temperature: -40°C to +125°C

DIMENSION AND PARAMETERS

No. of Cores × Cross-sectional Area	No. and Dia. of Wires	Diameter of Conductor (max.)	Nominal Insulation Thickness	Overall Diameter (min.)	Overall Diameter (max.)	Approx. Weight	Max. Conductor Resistance at 20 °C
No. × mm ²	no./mm	mm	mm	mm	mm	kg/km	MΩ × km
1×4.0	56/0.31	2.80	0.8	4.20	4.4	48	4.71